



12th September
2023



Te Reo o te Kura o Hato Hoāni The voice of St John's School

Kia ora whānau,

Nau mai ki Te Wiki o te reo Māori - Welcome to Māori Language Week. It feels as if this term has flown by. As we head into Week 9 we begin our acknowledgement and celebration of Te Wiki o te Reo Māori - Māori Language Week. This week in Aotearoa - New Zealand is a point in time to celebrate, promote and encourage the use of te reo – it is also a prompt that every time we use te reo we contribute to its revitalisation.

'Kia Kaha te Reo Māori'.

'Kia Kaha' is well understood in New Zealand English with its meaning of 'be strong'. We often talk about languages as if they are people – talking about language health, strength and revitalisation. So when we say 'Kia Kaha te Reo Māori' we're saying - 'Let's make the Māori language strong'. Don't be afraid to give te reo a go... here are a few phrases that you may like to try.

Mōrena — Good morning	Kia ora — Hi / hello / thank you (informal)	Aroha mai! — Sorry / excuse me!
Ngā mihi o te ahiahi — Good afternoon	Tēnā koe — Hello (to one person, formal)	Āe — Yes Kāo — No
Ngā mihi o te pō — Good evening		
Kia pai te rā Have a good day	Ko... tōku ingoa My name is...	Kei te pēhea koe? How are you?
Haere rā — Goodbye (speaker is staying)		
E noho rā — Goodbye (speaker is leaving)		
Mā te wā — Bye for now / see you later		
Nau mai, haere mai ki... — Welcome to...		Kei te pai — Good
		Kia ora rawa atu — Thanks so much

NON-UNIFORM DAY



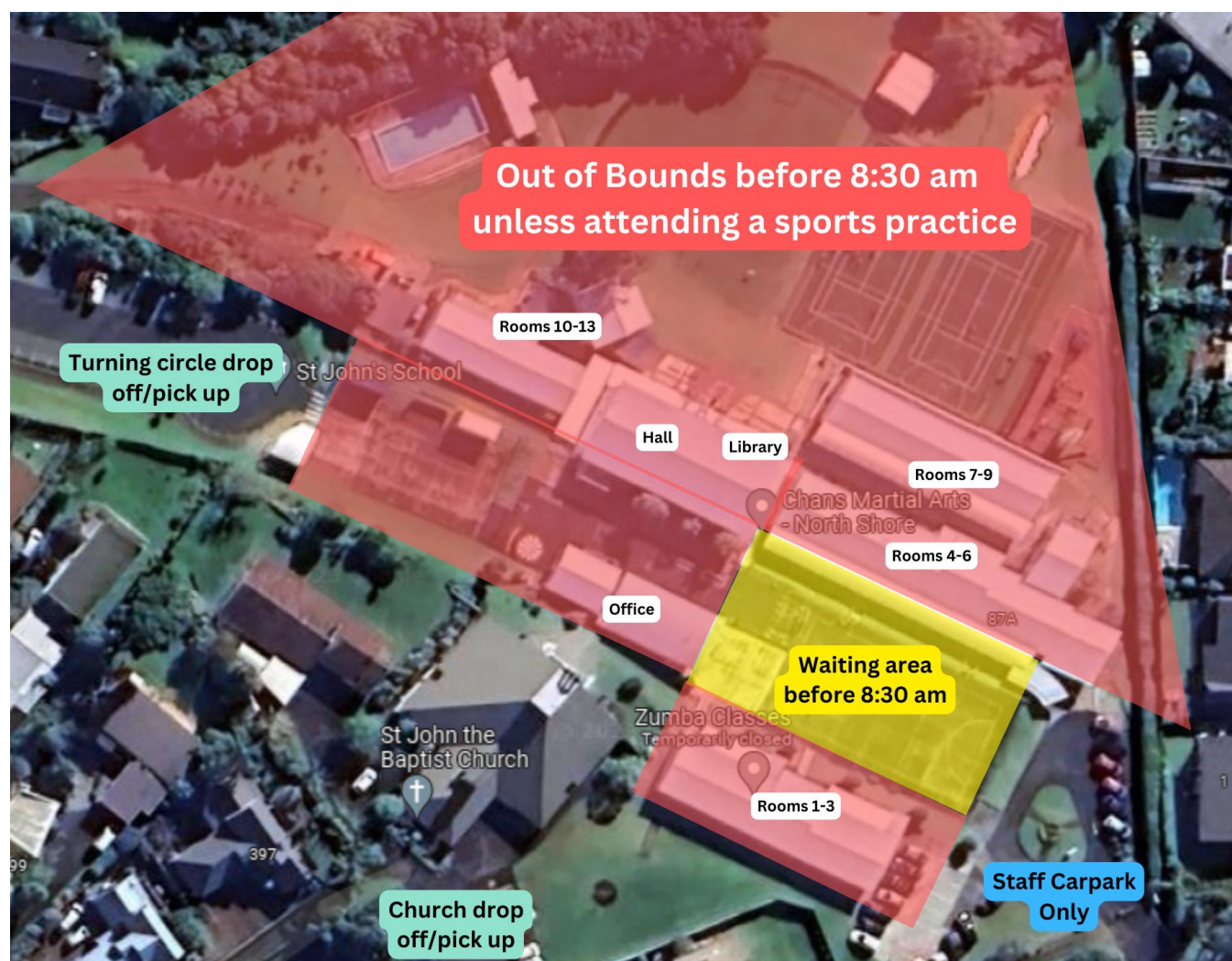
Looking ahead to next week, on the last day of Term, **Friday 22nd September**, we will be having a non-uniform day.

In exchange for wearing non-uniform, we ask the children to bring a gold coin donation which will be used for the Mystery Envelope Stall at the School Gala. These prove very popular with the children on the night, and the profits go towards the fundraising for the PTFA.

BEFORE SCHOOL PROCEDURES

Just a reminder that if children need to arrive at school before the 8:30am bell they must wait quietly on the seats outside Rooms 4 - 6 or on the top court area. This is a health and safety issue as, at this time, teachers are preparing their classes for the day and are unable to provide supervision. Parents are welcome to wait with their children in this area.

If a child is attending an organised sports practice, they may be on the turf or back court with their coach/manager. Children of coaches/managers may be with their parents, under their supervision. Siblings of other players and friends must wait outside Rooms 4-6 or on the top court as per normal.



St John's Before School Zones

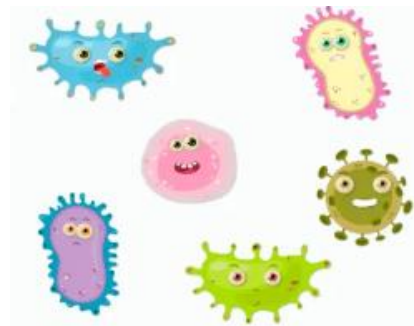
ABSENTEE REMINDER

A friendly reminder around notifying the school if your child is away from school. This is a matter of health and safety as it allows us to efficiently account for all children at the beginning of the day.

If your child is away sick, has an appointment or is needing to be absent for any reason, we ask that you notify the school for each day they are away. You may know in advance that they will be away for more than one day, if not, please contact the school each day.

This can be done by;

- Emailing Mrs Bridges directly at office@sjmb.school.nz
- Phoning the school office absentee line 09 478 7734 and leaving a message (OPTION 1) with your child's name, room number and the reason for their absence
- Submitting an absentee form using the button on the front page of the [school website](#)



ABSENTEE DUE TO ILLNESS

To stop sickness from spreading, it is important for you to keep your child at home when they are ill.

Ministry of Health guidelines, in the case of vomiting and diarrhoea, are that your child stays home for a full 24hrs following the last episode. In the case of Impetigo (School Sores) your child should have begun a course of antibiotics before returning.

SCHOOL SHOW

As part of the Performing Arts Curriculum this year the Year 6 children will be producing our school show. 'Flux', a show written by the children with the help of their teachers, tells the story of a class on a trip to the Auckland Museum.

Evening shows are on Tuesday 19th September and Wednesday 20th September, starting at 7:00pm. There will also be a matinee on Wednesday 20th September at 1:00pm.

Tickets are available via [Kindo](#) and are \$10 per person to help cover the cost of putting on the show.

STAFFING UPDATE

As mentioned in a previous newsletter, Mrs Baddeley will step down from her leadership role of Director of Religious Studies at the end of this term. I am very pleased to be able to tell you that Mrs Cara Mountjoy will be taking up this role for Term 4. Mrs Mountjoy already supports the Special Character of our school in many ways, particularly through leading music in the liturgy and is passionate and dedicated to ensuring that our Catholic faith is meaningfully integrated into all aspects of our school.

We will be farewelling Mrs Elizabeth Hames on Thursday 21st September with a liturgy. We will be gathering in the Church at 9:45am and warmly invite anyone who wishes to attend.

RELIGIOUS EDUCATION AND SOCIAL OUTREACH



CANS FOR CHRISTMAS

Thank you for your generosity for our Cans for Christmas drive last Friday.

We collected a total of 323 cans to support the St. Vincent de Paul and Missions.

Ngā mihi, Laura Baddeley

Manutaki Akoranga Katorika - Director of Religious Studies



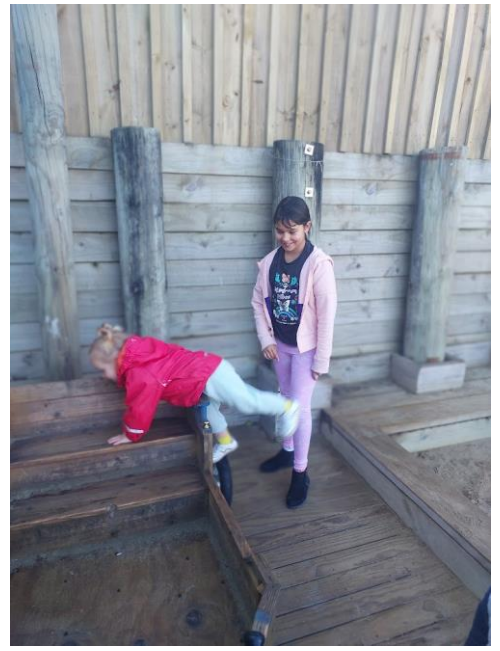
SOCIAL ACTION DAY – YEAR 5

Our Year 5 students participated in three different social outreach activities last week. The feedback received from the participating organisations, as well as from the students, teachers and parents involved, was extremely positive. It is something we will definitely be doing again. The children really gained satisfaction from contributing to others in a real and practical way.

Two groups went to daycare centres where they helped the staff with their duties: feeding the children, kitchen duties, cleaning and tidying and interacting with the children, reading, playing and caring for them. The third group went to Bayside Drive Reserve where they planted 350 trees. This was an outstanding physical achievement.

Thank you once again to Mrs Baddeley, Mrs Perry, Mrs Blind and Mrs Moss and the parent helpers for supporting this initiative with the children. If you know of any potential projects that might be suitable, we would love to hear about them.











ATTENDANCE DUES AND CATHOLIC SPECIAL CHARACTER CONTRIBUTION FOR 2024

The Board has received notice from the Auckland Common Fund Limited that Attendance Dues will be raised by \$7 per term in 2024 to \$129 per term [\$516 per annum] and notice from the Catholic Education Services Board that the Catholic Special Character Contribution Donation will rise from \$12.50 per term to \$15.00 per term [\$60.00 per student] in 2024.

The attendance dues rates are informed by a range of factors, including the following:

- 1. Access. First and foremost, the Board is very conscious of our shared objective to make Catholic education accessible to as many families as possible. The above increase for 2024 represents an increase of 6% and is in line with the annual inflation rate.*
- 2. Costs. ACFL manages costs associated with insurance, building compliance, debt servicing, and other professional services. We have experienced unprecedented increases in insurance costs this year with premiums increasing by about 30 – 42%.*

The Catholic Special Character Contribution pays for the costs of the CES team who

- provide formation and support for:*
- the teaching of Religious Education*
- evaluation and development of Catholic Special Character*
- boards, Principals and DRS's*
- Reimbursement of costs to schools for attending courses run by CES.*

Since 2014, the annual contribution has been held at \$50 per student. However, over 10 years there have been annual increases and adjustment is required. This increase has been kept to a minimum, as CESB is conscious of the many demands made on our whānau and is grateful that parents and caregivers support the Catholic Special Character of our schools by payment of this contribution.

Financial Assistance with Attendance Dues is available to families of Preference students in cases of genuine financial difficulties. Part of the criteria for receiving this assistance is that regular payments have been made at an affordable level. On our school website under INFORMATION – FEES (and ENROLMENTS) there is a full explanation of our fees and information about the Inland Revenue Tax Deductibility of all the fee areas. Attendance Dues are not tax deductible.

Please contact Michele Nash (Principal's PA) if you need any questions answered relating to School Fees michelen@simb.school.nz

STRATEGIC PLANNING FOR 2024 – 2026

At the last monthly meeting, the Board began the task of reviewing the feedback we received from the community as part of the consultation process in formulating the school direction for the next two years.

There were some clear themes and priorities for the students' journey through our kura as well as some ideas for the Board to investigate in their work plan around property development and resourcing.

We look forward to sharing the draft document before the end of the year.

WINTER NETBALL JNR TEAMS - FINAL PLACINGS AT KIDZPLAY

Yr 1 Sunflowers - noncompetitive grade
Yr 2 Blossoms - 5th place in Yr 2 Ponga Grade
Yr 2 Dandelions - 7th place in Yr 2 Kauri Grade
Yr 3 Violets - 8th place in Yr 3B Grade
Yr 3 Orchids - **1st place** in Yr 3D Grade
Yr 4 Bluebells - 4th place in Yr 4B Grade

Congratulations to our Yr 3 Orchids team who will be attending the Kidzplay Winter netball prizegiving on Saturday to receive their grade winners award.

WINTER NETBALL SNR TEAMS - FINAL PLACINGS AT NNH

Team 5/1 - 4th place in Yr 5 Grade 3
Team 5/2 - 7th place in Yr 5 Grade 4
Team 6/1 - 6th place in Yr 6 Grade 1
Team 6/2 - 3rd place in Yr 6 Grade 2
Team 6/3 - 4th place in Yr 6 Grade 8

WINTER HOCKEY TEAMS - FINAL PLACINGS AT NH HOCKEY

Yr 3 Girls Short Sticks - 5th in Year 3/4 Girls Orange Grade
Yr 3 & 4 Mixed Strikers - 4th in Year 3/4 Open Orange Grade
Yr 5 Mixed Bluesticks - 7th in Year 5/6 Open Blue Grade
Yr 5 & 6 Mixed Defenders - 3rd in Year 5/6 Open Orange Grade
Yr 6 Girls Blacksticks - 4th in Year 5/6 Girls Green Grade

Congratulations to all players who have represented St John's in our netball and hockey teams over the winter months. Huge thanks go to the coaches and managers of our teams, as without you, we would not be able to enter the competition leagues and have our children excel in their Primary school sports interests.

PARENT CO-ORDINATORS

There are several sports in our school that are currently without a 'Parent' Co-ordinator. If you would like to help out or you have a passion or strong interest in one of the listed sports and would love to take on a 'Parent' Co-ordinator role, please contact our Sports Co-ordinator Mrs Karen Dorrington sports@sjmb.school.nz to discuss what you might be able to do, to assist.

Flippa Ball.....Hockey.....Junior Netball.....Senior Netball.....

UNPAID SPORTS FEES - Payment Reminder

When you sign up your child to play sport, you agree to pay the fees within 10 days of them being posted to your Kindo account. We are in the process of reconciling our Term 3 accounts and there are some sporting fees that are overdue. Sports fee payments are outside of our 'day to day' school curriculum fee activities and are collected by the school on behalf of the organising sporting bodies that run the various sports that we subscribe to. We ask that you log in to your Kindo account (www.mykindo.co.nz) and check for any outstanding payments.

SECOND HAND UNIFORM SALE

We are currently looking for a volunteer to take over the role of parent co-ordinator of our second-hand uniform sales. If you are interested in finding out more about this role, please make contact with Fran, our current parent co-ordinator on 021 488 279.



ESOL AFTERNOON TEA

Parents of children receiving targeted ESOL support gathered together to hear about our ESOL programme and to have a chance to meet and greet each other. We had a lovely time in the school library. I would like to thank our ESOL teaching team, Mrs Hames, Mrs McFadzean and Mrs Williams for facilitating this event.



PTFA EVENTS



FROZEN FRIDAY 1st SEPTEMBER

Thank you to our wonderful volunteers for supporting the PTFA with Frozen Friday. Opening, counting, and serving 274 Juicies for the children to enjoy was a tremendous endeavour. We really appreciate the generosity of your time and effort. The Juicies were enjoyed as part of lunch, and it was a lovely way to mark the first day of Spring.

Our next Frozen Friday will be Friday 27th October (Term 4, Week 3).

QUIZ NIGHT - FRIDAY 8TH SEPTEMBER

Thank you to all those who attended our PTFA Quiz night last week. It was well attended and a lot of fun. A special thank you to our generous sponsors of rounds and prizes, to all the PTFA members who helped facilitate and set up the event and to Amanda Dixon-McIver, our creative quiz master for the night.

KIDS ART WORKS



The PTFA have joined up with **Kids Art Works** and our wonderful classroom teachers to turn your child's art into a unique keepsake for you and your family to enjoy.

Each child has created their own piece of artwork to be displayed on a range of products available for you to purchase. The range includes a calendar, set of 8 cards, a diary, mouse mat and sketch pads. You will shortly be able to review your child's art adorned on these products online (using a child specific code) and order directly through the website. Final products will be available in early November - just in time to meet those overseas posting cut-off times for Christmas!

Watch out for an individualised notice in your child's bag later this week.

GARDEN TO TABLE

The weather has made it another challenging term in the garden trying to get our gardening completed between showers.

Before Mr Dixon left, he extended one of our gardens, so the children have been busy building the garden up with soil, mulch, coffee grounds and our own compost. We also added another layer to the worm farm.

We have been harvesting our winter crops such as silver beet, kale, cabbage, cauliflower, purple broccoli and the citrus from our trees.



The kitchen groups have used this produce to make pesto, fritters, curries, green pasta, vegetable and herb scones and yummy citrus drinks.

At the moment we are working towards our Great Seedling Sale which we hope to have in October planting seeds to grow our own seedlings to sell.

Ange Moore
Garden Specialist



HOLIDAY AND SPORT PROGRAMMES

These are not connected to the school, for further information, please contact the programme providers directly.

SEPT/OCT HOLIDAY PROGRAMME

KIWI KICK STARS

KEEP ON KICKING THESE SCHOOL HOLIDAYS WITH KIWI KICK STARS!!!

Our awesome programme get kids exercising through super fun activities based around football and storytelling. Kids build confidence while improving their motor skills and coordination, learning how to play with others, focus and problem solve. Our friendly, experienced coaches have a hands-on, relatable approach and a passion for fun!

In case of a rainy day, we will have an indoor facility available Sunny or rainy the FUN doesn't stop!!
Everyone's a winner at Kiwi Kick Stars!

When:
Week 1: Tuesday 26th, Wednesday 27th, Thursday 28th Sept.
Week 2: Tuesday 3rd, Wednesday 4th, Thursday 5th October

Where: Hobsonville school fields (104A Hobsonville Road)

Time: 9 am to 3 pm

Cost: Individual day = \$50
Full week (3 days) = \$135
Second child discount = 10%

FOR MORE INFORMATION AND TO REGISTER GO TO
WWW.KIWICKICKSTARS.COM

AUT Millennium - 17 Antares Place, Rosedale, Auckland
Athletics Season 2023-24 Starting Soon!

Come to our Give It A Go days on:

Tuesday 19 September 5:30pm to 7pm

Sunday 8 October 2:00 - 3:30pm

Want to try your hand at athletics? Interested in learning how to run, jump, or throw? The abilities you develop in athletics help you become **stronger, faster,** and more **agile,** preparing you for nearly any sport!